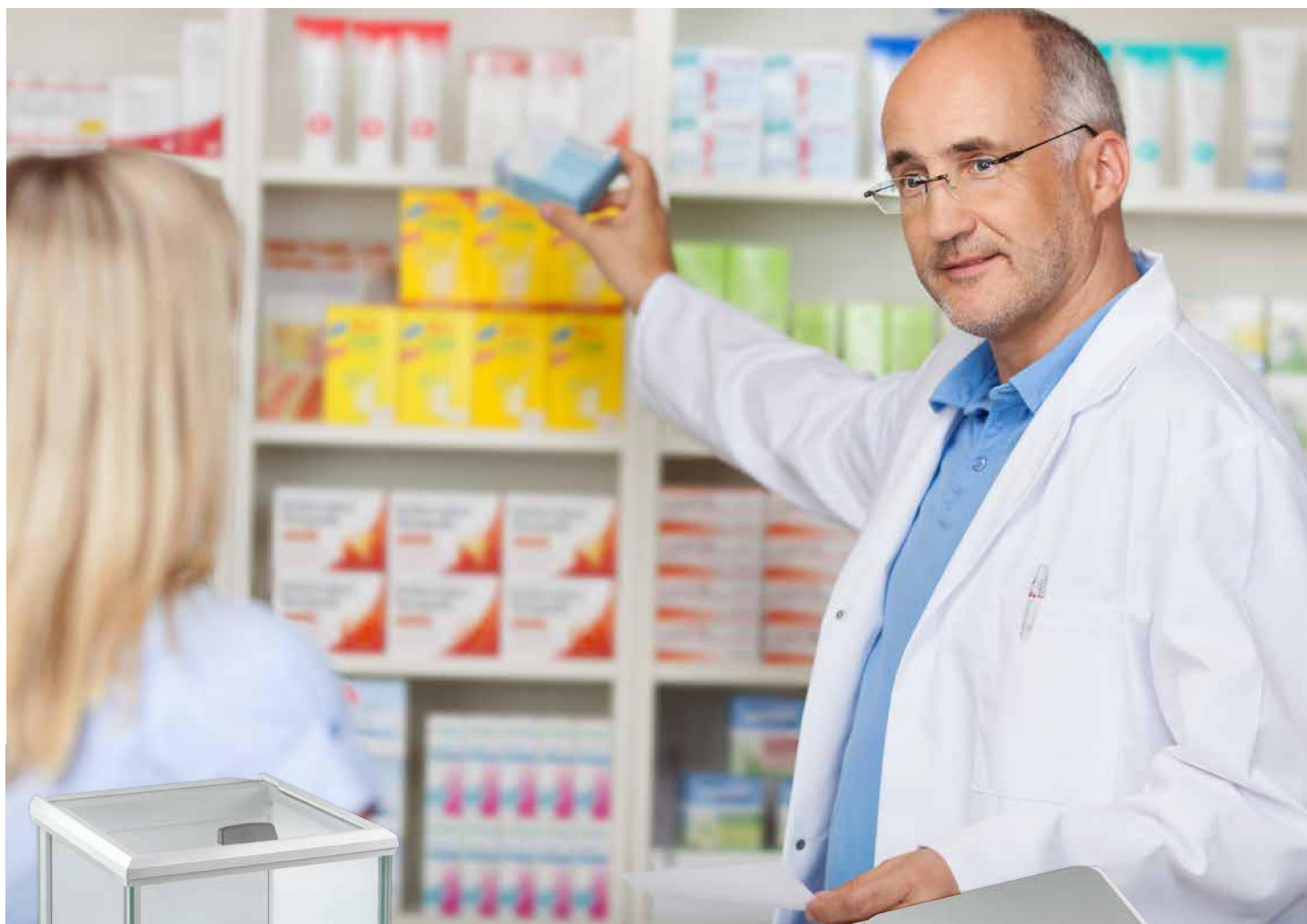


Pharmacy balances **KERN ABJ · EG · KBJ**

Highly-accurate precision balances for laboratories, hospitals and pharmacies



KERN ABJ



KERN KBJ



KERN EG

Features

Precision balance KERN KBJ

- For the manufacture of pharmaceutical preparations, such as infusion solutions, ophthalmic medicinal products, ointments, etc.
- Verified according to class II
- Net-total weighing function
- Weighing with tolerance range, ideal for portion division, dispensing, grading
- GLP/ISO record keeping with optional printer **KERN YKS-01, € 390,-**
- Stainless steel weighing plate

Technical data

- LCD display, digit height 9 mm
- Dimensions of weighing plate WxD 130x130 mm
- Overall dimensions WxDxH 165x230x80 mm
- Mains adapter included
- Net weight approx. 1.5 kg
- For more information visit www.kern-sohn.com/en/KBJ

STANDARD



OPTION

Precision balance KERN EG

- For the individual development of new medicinal products or types of medication such as tinctures, juices, capsules, creams, etc.
- Verified according to class II
- Internal adjusting weight
- GLP/ISO record keeping with optional printer **KERN YKS-01, € 390,-**
- Large stainless steel weighing plate

- LCD display, digit height 16 mm
- Dimensions of weighing plate max. WxD 180x160 mm
- Overall dimensions WxDxH 192x265x87 mm
- Mains adapter included
- Net weight approx. 3.7 kg
- For more information visit www.kern-sohn.com/en/EW-N_EG-N

STANDARD



OPTION

Analytical balance KERN ABJ

- For the manufacture of pharmaceutical preparations, analysis, quality assurance, final checking, etc.
- Verified according to class I
- Internal, motor-driven adjusting weight
- High-precision weighing technology for the most accurate weighing results
- Large glass draught shield with 3 sliding doors for easy access to the items being weighed
- GLP/ISO record keeping with optional printer **KERN YKS-01, € 390,-**
- Stainless steel weighing plate

- LCD display, digit height 14 mm
- Dimensions of weighing plate ø 91 mm
- Overall dimensions WxDxH 210x340x325 mm
- Weighing space WxDxH 174x162x227 mm
- Mains adapter included
- Net weight approx. 6 kg
- For more information visit www.kern-sohn.com/en/ABS-N_ABJ-NM

STANDARD



STANDARD OPTION FACTORY



i Within the EU, official verification is mandatory by law for scales that are intended for use in commercial trade. Please add this to your order. We require the location of use and the post code for the verification.

Model	Weighing range [Max] g	Readout [d] g	Verification value [e] g	Reproducibility g	Linearity g	Price excl. of VAT ex works €	Options alternative			
							Verification		DKD Calibr. Certificate	
							KERN	€	KERN	€
KBJ 650-2NM	650	0,01	0,1	0,01	±0,003	520,-	965-216	66,-	963-127	72,-
EG 620-3NM	620	0,001	0,01	0,001	±0,004	930,-	965-201	110,-	963-101	138,-
EG 2200-2NM	2200	0,01	0,1	0,01	±0,01	800,-	965-216	66,-	963-127	72,-
EG 4200-2NM	4200	0,01	0,1	0,01	±0,02	880,-	965-216	66,-	963-127	72,-
ABJ 80-4NM	80	0,0001	0,001	0,0002	±0,0003	940,-	965-201	110,-	963-101	138,-
ABJ 120-4NM	120	0,0001	0,001	0,0002	±0,0003	970,-	965-201	110,-	963-101	138,-
ABJ 220-4NM	220	0,0001	0,001	0,0002	±0,0003	1090,-	965-201	110,-	963-101	138,-