

Accessories

Barcode scanner

PET-A05	163
Barcode scanner, RS-232	
PET-A09	163
Barcode scanner, USB	

Data interfaces / Accessories

CFS-A04	160
2nd RS-232 data interface	
AFH 12 · AFH 14	160
RS-232 / USB adapter	
INTERFACE CABLE	158
Interface cable for RS-232	
KET-A01	164
Analogue / Digital converter (suitable for models KERN ILT-BM, ILT-GM, BBB, BBN, KET-TM, KEN-TM)	
YKI-01	158
RS-232 / Ethernet adapter	
YKI-02	159
RS-232 / Bluetooth adapter	
YKI-03	159
RS-232 / WLAN adapter	

Density set

962-335V	161
Density determination of the volume plummet	
YDB-03	161
Universal density set	

Printers

PET-A13	163
Direct thermal label printer	
PET-A14	163
Thermal transfer and direct thermal label printer	
YKB-01N	157
Thermal printer	
YKC-01	158
Bluetooth thermal printer	
YKN-01	157
Matrix needle printer	
YKS-01	157
Thermal statistics printer	

Software

KET-A04 · PET-A01	163
Software for database management	
SCD-4.0	159
Balance Connection Software	

Miscellaneous

ABS-A08	161
Protective dust cover	
CFS-A03	160
Signal lamp	
KET-A02	164
Wall mount to fit the display device KET-TM	
KET-A05 · KET-A08	164
Transponder card reader, transponder cards (suitable for models KERN ILT-BM, BBB, BBN, ILT-GM, KET-TM, KEN-TM)	
KXS-A03	160
Foot switch	
PET-A06	164
USB keyboard	
YKA-02	161
Power supply adapter set	
YBI-01	162
Ioniser to neutralise electrostatic charge	
YPS-03	162
Weighing table	

Tare pan

CH-A01N	161
Tare pan with pan beam	
RFS-A02	161
Tare pan	

Transport case

MPS-A07	162
Sturdy transport case for scales, suitable for series KERN EOE and EOB	
RFB-A02	162
Sturdy transport case for scales, suitable for series KERN WTB-N and RFB	

Test weights accessories

315-242, 315-243, 315-245, 335-240	183
Tweezers	
317-280, 317-290	183
Gloves	
318-270	183
Dusting brush	

Second display

KET-A03 · PET-A03	164
Second display	
KET-A06	163
Large display (suitable for KERN ILT-GM, BBB, BBN, KET-TM, KEN-TM)	
YKD-A02	160
Large display (suitable for KERN IFB, BFB, NFB, UFA, UFB)	

Printers

Important note for printer orders: Please state your balance model when ordering, so that the printer can be preconfigured in the factory to suit your balance.

STANDARD

RS 232



KERN YKN-01

Matrix needle printer

For printing the weights on normal paper, which is ideal for long-term archiving

Technical data

- Needle print
- Speed: 1 line/sec
- Max. 16 characters per line
- Paper stripes: 44 mm wide
- Operation via mains adapter 230V/50Hz (standard)

- Dimensions: WxDxH 158x106x40 mm
- Interface cable not included with delivery

Price printer without interface cable, KERN YKN-01, € 200,-

Accessories

Paper rolls (5 pieces), KERN YKN-A01, € 35,-

STANDARD

RS 232



KERN YKB-01N

Thermal printer

For printing weighing results, recipes, quantities etc. or for GLP record keeping of balance adjustment with date and time print. Language versions: DE, GB, FR.

Technical data

- Thermal print
- Speed: 0,75 lines/sec
- Max. 40 characters per line
- Paper stripes: 112 mm wide
- Operation via mains adapter 230V/50Hz (standard)

- Dimensions: WxDxH 165x140x50 mm
- Interface cable not included with delivery

Price printer without interface cable, KERN YKB-01N, € 355,-

Accessories

Paper rolls (10 pieces), KERN YKB-A10, € 55,-

STANDARD

RS 232



KERN YKS-01

Thermal statistics printer

For printing weights, recipes etc. or for GLP record keeping of weighing data with date and time print (not in combination with KERN counting scales or KERN MLS, MLB moisture analysers).

Numerator; with statistical functions such as count and total of all measurements, minimum and maximum values of the main unit, range (Max-Min), average value, standard deviation, available units: mg, g, kg, pcs. Language versions: DE, GB, FR.

Technical data

- Thermal print
- Speed: 0,75 lines/sec

- Max. 40 characters per line
- Paper stripes: 112 mm wide
- Operation via mains adapter 230V/50Hz (standard)
- Dimensions: WxDxH 165x140x50 mm
- Interface cable not included with delivery

Price printer without interface cable, KERN YKS-01, € 390,-

Accessories

Paper rolls (10 pieces), KERN YKB-A10, € 55,-

Individual header data:

For printers **KERN YKN-01, YKB-01N** the free software **KERN SHM-01** (see www.kern-sohn.com) can be used to print 4 header lines on the printout (see marking on balance).

Compatible models: KERN 440, DE, FCB, FKB-A, PCB, PCD.

STANDARD



KERN YKC-01

Bluetooth thermal printer

For printing weights, recipes, etc. or for GLP record keeping of weighing data. Suitable for wireless connection to compatible, Bluetooth-enabled balances (Kern: DLT-N or all models with RS-232 data interface in combination with RS-232/Bluetooth Adapter KERN YKI-02), dynamometers, etc.

- Operation via mains adapter 230V/50Hz (standard)
- Dimensions: WxDxH 85x113x57 mm
- Interface cable not included with delivery

Price printer without interface cable, KERN YKC-01, **€ 690,-**

Technical data

- Thermal print
- Speed: 60 mm/sec
- Max. 42 characters per line
- Paper stripes: 57 mm wide

Accessories

Paper rolls (10 pieces), KERN YKC-A01, **€ 35,-**

Interface cable for RS-232

For direct connection to a printer or PC, cable length approx. 1.5 m. The interface parameters can be set using the balance keypad.

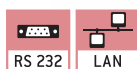
Printer, ...	→	YKB-01N, YKN-01, YKI-01, PC	YKS-01	Cable Price excl. of VAT ex works €
Balance	↓	Product code	Product code	
440, 572, 573, ALJ-AM, ALS-A, ALT-B, CDS, CKE, DBS, DE-D, DLB, DLT, DS, EMB-V, FCB, FKB, FKB-A, FKT, FKTF, IKT, KB, PCB, PCD, PKS, PKT, PLJ-A, PLJ-J, PLS-A, PLS-F, PLE, PLT			572-926	46,-
BFB, EWJ, GAB-N, GAB-P, IFB, KFB-TM, NFB, PFB			CFS-A01	
EG-N, EW-N, PEJ, PES (printer connection unidirectional)			474-926	
ABJ, ABS (year of production 2000-2012), ABT, PBJ, PBS			770-926	
AEJ-CM, AEJ-NM, AES-C, AES-N, AET, ILJ-C, ILS-C, ILT, PET, PLJ-C, PLJ-G			MLB-A05	
HFT			KFF-A01	
AET, DLB, DLT, ILT, KFS-T, MLB-C, MLS-C, PET		MLB-A05	-	
ABJ-NM, ABS-N			ACS-A01	75,-
KFS-TM, BFS, IFS, CFS, CPB		CFS-A01		46,-



Note:

The interface cable is **free of charge** if you purchase balance and printer together.

STANDARD



KERN YKI-01

RS-232 / Ethernet adapter

Adapter to connect balances, force measuring devices etc. with an RS-232 interface **2** to an IP-based Ethernet network **1**. The adapter allows direct integration of measuring devices into most company networks, with automatic configuration using DHCP or statistical IP allocation. You can access the current measuring data at any time from within the whole network, without having to use additional cables. The adapter supports a wide range of configurational options using the enclosed administration software or through the web interface. The driver delivered with the goods allows you to access the measuring device with existing, non-network-compatible applications using a virtual COM port.

Compatible with KERN BalanceConnection software.

DIN track mount **3** or free-standing. Scope of supplies: RS-232 Ethernet adapter with 1x Port RS-232 **1**, mains adapter **4**, CD (driver, software, operating instructions), adhesive feet.

Price interface cable incl. (please provide balance model in order), KERN YKI-01, **€ 390,-**

Note: To connect to your network, you will need information from your network administrator. We recommend discussing connecting your device into your network with the administrator before you place your order.

STANDARD



KERN YKI-03

RS-232 / WLAN adapter

High-quality adapter for the wireless connection of balances, force measuring devices etc. with RS-232 interface to WLAN-enabled devices, such as tablets, laptops, Smartphones etc. In this way, where there is a physical separation or a large distance between the devices, the weighing data from one or several balances can be easily transferred wirelessly to a WLAN device or a network (relevant software on the WLAN device needed, not included with the delivery). The adapter allows for direct integration of measuring devices into most company networks, with automatic configuration using DHCP or statistical IP allocation. You can access the current measuring data at any time from within the whole network, without having to use additional cables. The adapter supports a wide range of configurational options using the enclosed administration software or through the web interface. The driver delivered with the goods allows you to access the measuring device with existing, non-network-compatible applications using a virtual COM port.

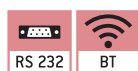
Compatible with **KERN Balance Connection Software**. The adapter also has an Ethernet interface for a wired connection to an IP-based Ethernet network **1**. Thanks to the screw terminals **2**, the power connection can be implemented individually using individual wires or using the robust, screw-in power connector **3**. Large input voltage range from 12 V – 8 V. Suitable for wall mounting and DIN track mount **4** or free-standing.

Scope of supplies: RS-232/WLAN adapter, mains adapter, network cable (1 m), driver CD.

Price without interface cable, KERN YKI-03, **€ 780,-**

Note: to connect to your network, you will need information from your network administrator. We recommend discussing connecting your device into your network with the administrator before you place your order.

STANDARD



KERN YKI-02

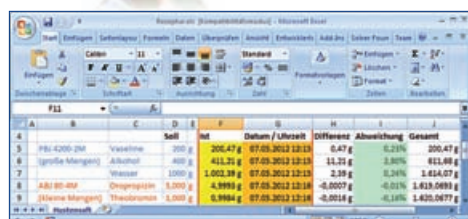
RS-232 / Bluetooth adapter

Adapter for the wireless connection of balances, force measuring devices etc. with an RS-232 interface to Bluetooth devices, such as Bluetooth printers (e.g. KERN YKC-01), tablets, laptops, Smartphones etc. In this way, where there is a physical separation or a large distance between the devices, the weighing data from one or several balances can be easily sent wirelessly and printed on a Bluetooth printer or transferred to a Bluetooth device (you would need the relevant software on the Bluetooth device, not included with the delivery). The compact adapter with its attractive design can usually be connected directly to the balance **1**, i.e. an additional interface cable would not be necessary. Power supply will be either through the balance (if compatible) or with the mains adapter which is supplied as standard **2**.

Range up to 100 m in the open, depending on obstacles, such as, e.g., walls, and the sensitivity and type of antenna of the receiver. Intersections of send and receive lines using the DCE/DTE switch **3**.

Scope of supplies: RS-232/Bluetooth adapter, mains adapter (EU/GB/USA/AUS/CH) **2**, USB-A to Mini USB-B cable **4**, gender changer **5**, driver CD.

Price without interface cable, KERN YKI-02, **€ 260,-**



KERN SCD-4.0

Balance Connection Software

For the direct transmission of weighing data to Windows applications (operating systems Windows XP, Vista, 7, 8)

- Transfer via RS-232 to the PC, e.g. to MS Excel
- Transfer at the touch of a key or on a time-controlled basis
- Date and time can be displayed at any time
- The interface protocols for KERN balances are already predefined

- Interface cable included. Please specify balance model when ordering (see interface cable table)

Benefits:

- Typing errors during e.g. manual transfer are avoided
- GLP-compliant lab software

KERN SCD-4.0, **€ 150,-**



KERN CFS-A04

2nd RS-232 data interface

separate Y cable, e.g. for simultaneous connection of a printer, signal lamp etc. Suitable for BFB, CPB-N, CFS, GAB-N, GAB-P, IFB, KFB-TM, NFB, UFA, UFB, SFB, BAN, UFN, NFN

Sim. to illustration, KERN CFS-A04, € 35,-



KERN AFH 12

RS-232 / USB adapter

RS-232 to USB converter, fits on all balances and measuring instruments with RS-232 port.

Scope of supplies:
Converter cable, CD with driver,

KERN AFH 12, € 85,-



KERN AFH 14

2x RS-232 / USB adapter

RS-232 to USB converter, fits on all balances and measuring instruments with RS-232 port.

Scope of supplies:
Converter cable, CD with driver,
KERN AFH 14, € 115,-



KERN KXS-A03

Foot switch

Ideal, when 2 free hands are required for application. TARE or PRINT function can be selected. For the PRINT function you will need the RS-232 interface cable KERN KXS-A04.

Must be ordered at purchase, suitable for series IXS, SXS, KXS-TM, KXG-TM.

KERN KXS-A03, € 65,-



KERN YKD-A02

Large display

with superior display size, digit height 3" (76 mm). Luminescent, red LED display for easy reading of weight, even from a distance or under poor lighting conditions. 6 segments, mains connection as standard (230 V, EU/GB), connection using RS-232 data interface, dimensions WxDxH 541x55x180 mm.

Suitable for series IFB, BFB, NFB, UFA, UFB.

KERN YKD-A02, € 200,-



KERN CFS-A03

Signal lamp

Signal lamp for visual support of weighing with tolerance range. Three-colour LED, red, green, yellow. Power supply via balance using RS-232. Total dimensions WxDxH 100x180x300 mm

Suitable for series GAB-N, GAB-P, CPB-N, IFB, NFB, KFB-TM, BFB, UFA.

KERN CFS-A03, € 250,-



KERN YKA-02

Power supply adapter set

from standard EU to GB/US/AUS/CH etc. Four pieces. Ideal for devices with Class II protection (not earthed). Ideal for Euro moulded plug,

KERN YKA-02, € 25,-



KERN YDB-03

Universal density set

Universal density set for precise and convenient density determination of liquids and solids $\leq/\geq 1$. Suitable for all KERN analytical balances.

Scope of supplies: Beaker, thermometer, sample holder, adapter, equalising weights, volume plummet (stainless steel, 20 g), universal submersible basket for solid bodies which float and sink. The wire of the submersible

basket has a diameter of 0.5 mm and therefore complies with the requirements of DIN EN ISO 1183-1 (Test methods for the determination of density of non-foamed plastics),

KERN YDB-03, € 520,-

KERN 962-335V

Density determination of the volume plummet

The density of the enclosed steel volume plummet can be determined by using the universal density set to measure solids. We would be pleased to determine the density of the volume plummet for you quickly and at a reasonable price in our DAkKS calibration laboratory.

You will receive a calibration certificate with all data relating to the density and volume,

KERN 962-335V, € 141,-



KERN RFS-A02

Tare pan

Made of stainless steel, which makes cleaning easy and hygienic. Ideal for weighing loose screws, small parts, fruit, vegetables, cheese, etc.

- WxDxH 370x240x20 mm
- Net weight approx. 524 g

KERN RFS-A02, € 50,-



KERN CH-A01N

Tare pan with pan beam

Made of stainless steel. Ideal for weighing loose small parts, fruit, vegetables etc. Max. load 30 kg. Removable tare pan which makes cleaning easy and hygienic. Suitable for models KERN CH 15K20, HCB 20K10, HCN 20K50IP, HDB-N.

- Dimensions: Tare pan Ø/H 273x40 mm
- Pan beam: WxDxH 320x273x300 mm
- Total dimensions: WxDxH 320x273x340 mm
- Total net weight approx. 1000 g

KERN CH-A01N, € 65,-



KERN ABS-A08

Protective dust cover

For protection from dust and light. Suitable for all KERN analytical balances and precision balances with glass draught shield.

KERN ABS-A08, € 30,-



KERN RFB-A02

Sturdy transport case

for the safe transport and storage of series WTB-N, RFB, lockable.
Inner dimensions WxDxH 330x290x117 mm, total dimensions WxDxH 510x360x220 mm, (scale not included with delivery!)

KERN RFB-A02, € 95,-



KERN MPS-A07

Sturdy transport case

for the safe transport and storage of series EOE, EOB scales with weighing plate size ≤ 315x305mm without stand, inner dimensions WxDxH 425x315x65 mm, net weight approx. 2,2 kg, (scale not included with delivery!)

KERN MPS-A07, € 105,-



KERN YBI-01

Ioniser to neutralise electrostatic charge

Weighing items which are non-conductive, such as plastic, china, glass, etc often carry electrostatic charge. The electromagnetic field which then occurs between the items and the balance can cause the weighing result to be distorted by up to a gramme.

- Neutralisation ± 20V
- Discharge of ozone 0,04 ppm/h
- Dimensions WxDxH 97x53x31 mm, WxDxH 190x60x110 mm incl. mount
- Net weight approx. 0,11 kg approx. 0,55 kg incl. mount
- Mains connection 110-230V/50Hz, AC power supply, 12V DC output

Therefore, when weighing in milligrammes or even smaller increments, we recommend neutralising the electrostatic charge with the KERN AC-Korona discharge ioniser.

KERN YBI-01, € 1350,-

With the mount, 1 conveniently next to the balance or you can manually direct it from all sides onto a particular weighing item 2.



KERN YPS-03

Weighing table

Accurate measuring results require stable working conditions! The KERN YPS-03 weighing table has been constructed to absorb vibrations and oscillations, which would otherwise distort the weighing result.

The YPS-03 weighing table consists of:

- Polished granite plate (34 kg) as integrated working surface, positioned on absorbing rubber components
- Work table with steel profile frame and height-adjustable feet

- Total dimensions WxDxH 770x650x815 mm
- Dimensions granite plate WxD 270x410 mm
- Net weight approx. 55 kg (scale not included with delivery!)

1 Dispatch complete on pallet. Please ask for dimensions, gross weight, shipping costs,

KERN YPS-03, € 900,-



KERN PET-A01 / KERN KET-A04

Software for database management

for easy maintenance of item data at the PC, such as, e.g., creating item detail links, capturing or deleting item data, creating item text etc. Data of the following categories can be edited: customers, stocks, universal variables, labels, packaging, users, products. Data trans-

fer to the balance using the interface cable (included as standard in the delivery with the balance),

for serie AET, PET: KERN PET-A01, € 300,-
for serie ILT: KERN KET-A04, € 300,-

STANDARD



RS 232



PET-A05



PET-A09

KERN PET-A05 / KERN PET-A09

Barcode scanner

ergonomically optimised hand-held version, for connection to an RS-232 interface. Particularly robust and durable. Scratchproof scan window made of hardened glass. Large working area: data collection is possible up to a distance of 43 cm, dimensions WxDxH 152x84x63 mm,

Scope of supplies: barcode scanner, interface cable, mount,

RS-232 version: KERN PET-A05, € 350,-
USB version: KERN PET-A09, € 350,-

STANDARD



RS 232



USB



KERN PET-A13

Direct thermal label printer

very quiet and very quick, print speed of 150 mm/sec, maximum print width: 104 mm, maximum print length: 812 mm, internal power supply, interfaces: USB, RS-232. Especially suitable for the logistics industry, the pharmaceutical industry and in the retail sector. Dimensions WxDxH 231x289x186.

Scope of supplies: Printer, USB interface cable, labeling software.

Suitable for series KERN AET, PET, BBB, BBN, ILT, KET-TM, KEN-TM.

KERN PET-A13, € 980,-

STANDARD



RS 232



USB



KERN PET-A14

Thermal transfer and direct thermal label printer

very quiet and very quick print speed of 101.6 mm/sec, maximum print width: 104 mm, maximum print length: 812 mm, internal power supply, interfaces: USB, RS-232. Especially suitable for the food, chemical and pharmaceutical industries. Software for easy editing of (adhesive) labels included with delivery. The sample labels can be sent to the balance as well as the printer. The sample labels can be

sent to the balance as well as the printer. Dimensions WxDxH 231x289x270 mm.

Scope of supplies: Printer, USB interface cable, labeling software.

Suitable for series KERN AET, PET, BBB, BBN, ILT, KET-TM, KEN-TM.

KERN PET-A14, € 1000,-

STANDARD



RS 232



RS 485



IP 66



KERN KET-A06

Large display

with superior display size, digit height 4,4" (117,7 mm). Luminescent LCD display for easy reading of weight, even from a distance or under poor lighting conditions. Ready for wall mounting. 6 segments, mains connection as standard (230 V, EU / GB). Connection to the balance using the RS-232 or RS-485 interface. Stainless steel housing IP66 protection.

Dimensions WxDxH 541x55x180 mm.

Suitable for series KERN ILT-GM, BBB, BBN, KET-TM.

KERN KET-A06, € 1450,-

STANDARD

RS 232



KERN PET-A03 / KERN KET-A03

Second display

Ideal for training and demonstration purposes in laboratories or industry. Large backlit LCD display with digit height 25 mm. KERN KET-A03: 6 segments, KERN PET-A03: 8 segments. 2 additional data interfaces RS-232. Interface cable to the balance, length approx. 1,5 m, as well as mains adapter standard.

Dimensions WxDxH 200x55x100 mm.

Suitable for series KERN AET, PET:
KERN PET-A03, € 210,-
Suitable for series KERN ILT:
KERN KET-A03, € 210,-

STANDARD

USB



KERN PET-A06

USB keyboard

For easy capture of item data at the balance, for connection to a USB interface. 105 keys, separate numeric keypad, black housing, Dimensions WxDxH 152x84x63 mm.

Suitable for series KERN AET, PET, BBB, BBN, ILT, KET-TM, KEN-TM.

KERN PET-A06, € 45,-

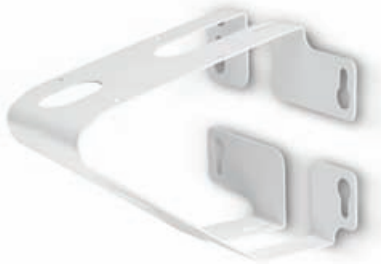


KERN KET-A01

Analogue/Digital converter

to connect up to two platforms to the display device, suitable for series KERN ILT-BM, ILT-GM, KET-TM, KEN-TM, BBB, BBN,

KERN KET-A01, € 350,-



KERN KET-A02

Wall mount

for mounting the display device, (see illustration), dimensions WxDxH 135x148x110 mm, suitable for series KERN ILT-BM, ILT-GM, KET-TM,

KERN KET-A02, € 190,-
(Display device is not included with the delivery)



KERN KET-A05 / KET-A08

Transponder card reader

RFID technology, dimensions WxDxH 133x30x98 mm, suitable for series KERN ILT-BM, ILT-GM, BBB, BBN, KET-TM, KEN-TM. Scope of delivery: transponder card reader, interface cable for connecting to the digital I/O interface. Transponder cards are not included with the delivery.

Transponder cards for transponder card reader KET-A05, pack of 10 pcs.,

KERN KET-A08, € 65,-

KERN KET-A05, € 450,-

